

Snow and Ice Control

October, 20 2011



The City's Snow & Ice Control Program (SNIC)

- Pre-planned, measured response to snowfall
- Have crews available around the clock to react
- We maintain roads in winter months by:
 - anti-icing before a snowfall
 - sanding, salting and plowing roadways
 - snow removal and storage
 - sidewalk snow removal
 - clearing of stairs, LRT stations, bus pads and pedestrian bridges



Why hasn't my road been plowed?

- Roads in Calgary are plowed and sanded based on a Council-approved priority system
 - The priority of a road depends on the traffic volume.
 - The highest priority roads are classified as 1, the lowest, 4



The City's Priority System

Priority 1

Priority 1 routes are major roadways with traffic volumes exceeding 20,000 vehicles per day

Priority 2

Priority 2 routes are roads that carry 5,000 to 19,999 vehicles per day, also trouble spots and known high-collision areas

Priority 3 & 4

Priority 3 and 4 routes typically carry residential traffic

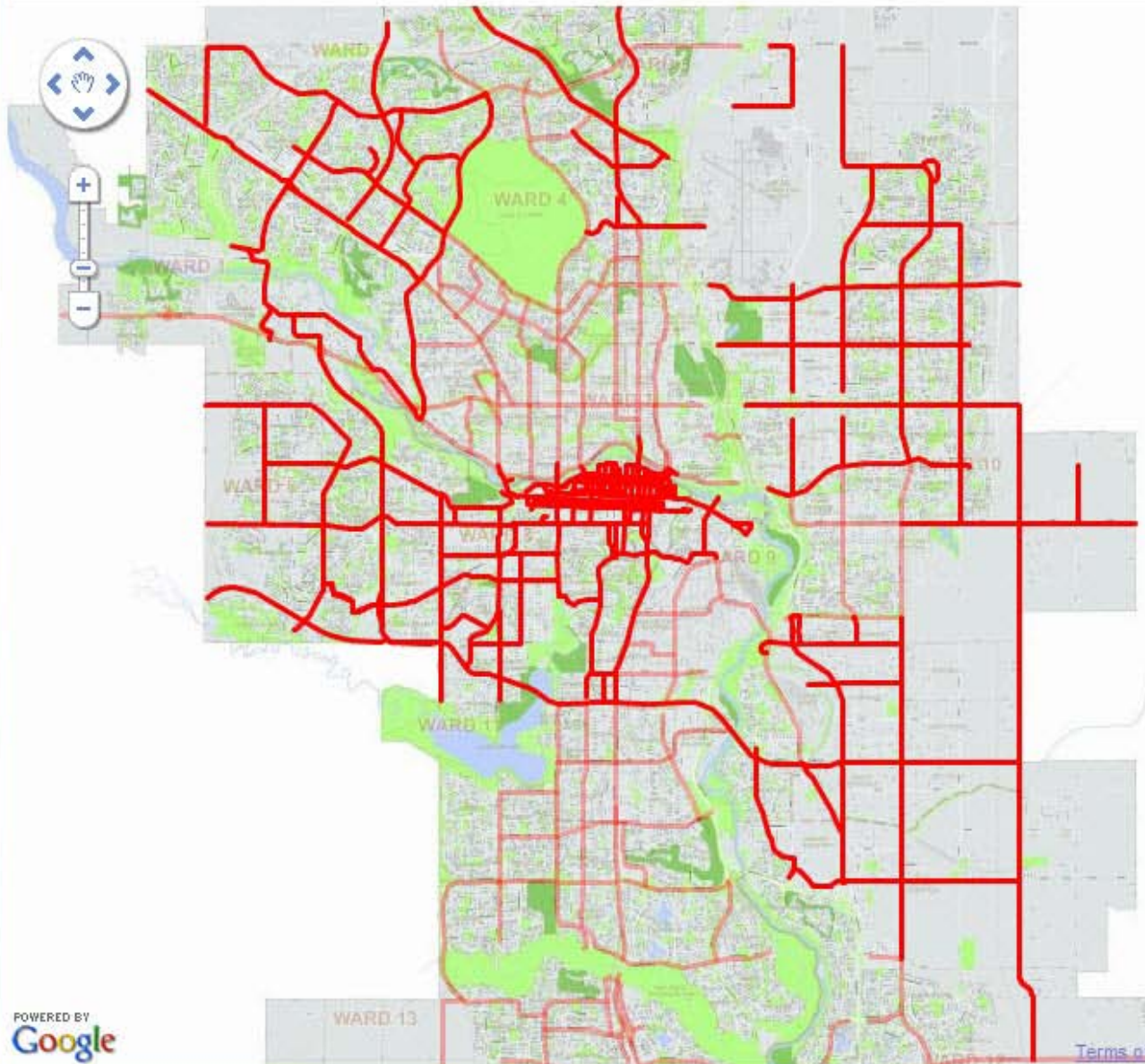
» More information on Snow & Ice Control

← SHARE THIS PAGE PRINT

Follow us on    



3° C
Partly Cloudy
Forecast: Sunny



Viewing options

Select the options below to customize your map view

- Priority 1 Routes [?]
- Priority 2 Routes [?]
- Traffic Camera Locations [?]
- Snow Plow Locations [?]
- Sanding Truck Locations [?]

Zoom to a Community 

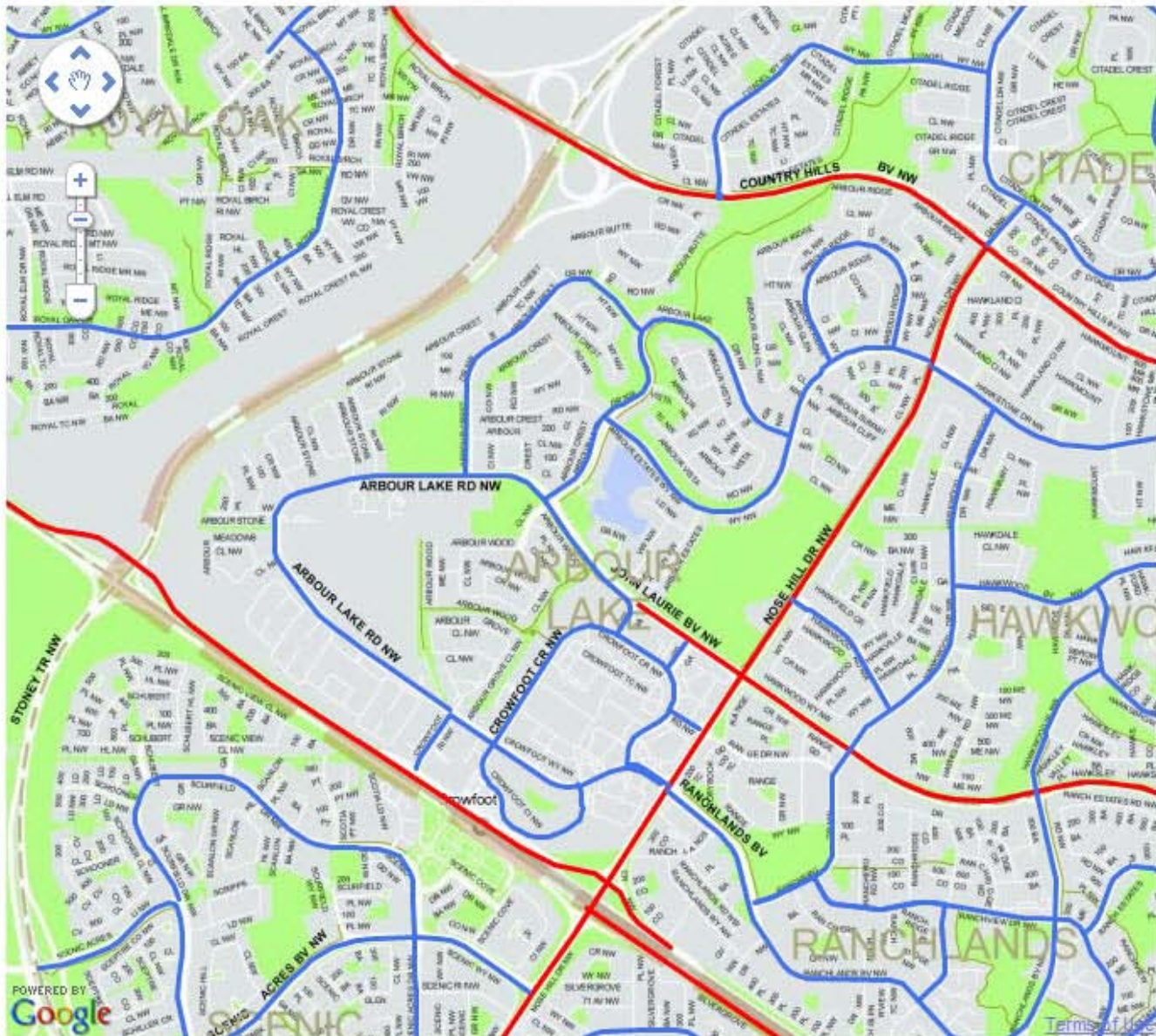
» More information on Snow & Ice Control

← SHARE THIS PAGE PRINT

Follow us on    



5° C
Partly Cloudy
Forecast: Sunny



Viewing options

Select the options below to customize your map view

- Priority 1 Routes [?]
- Priority 2 Routes [?]
- Traffic Camera Locations [?]
- Snow Plow Locations [?]
- Sanding Truck Locations [?]

Arbour Lake

How long will it take to get the roads plowed?

Road Designation	Response Time - 7 Day Plan
Priority 1 Routes	Through lanes plowed and sanded completed within 24 hours of the end of snowfall (100% sanded/salted and 90% plowed)
Priority 2 Routes	Through lanes plowed and sanded completed within 48 hours of the end of snowfall (100% sanded/salted and 90% plowed)
Priority 3 Routes	Within 4 days after Priority 2 routes complete (sanded and plowed when temperature conditions allow)
Priority 4 Routes	Within 4 days after Priority 2 routes complete (sanded and plowed when temperature conditions allow)

What material is being put down on the roads?

SALT

- environmentally safe, naturally occurring product
- used when road surface temperatures are between 0°C and -5°C
- salt melts accumulated snow and ice

PICKLE

- "pickle" is a mixture of salt and sand chips
- used when road temperatures are below -5°C
- improves traction for vehicles

ANTI-ICING AGENT

- may be applied prior to a snowfall
- used when road temperatures are about 0°C to prevent snow and ice from adhering to the road
- reduces the amount of salt and sand needed during the snowfall

Is there a priority system for public sidewalks?

- There is also a priority system in place for hand crews:
 - Steps/overpasses – Priority 1
 - Walks – Priority 2
 - Bus pads – once Priority 1 and Priority 2 are done



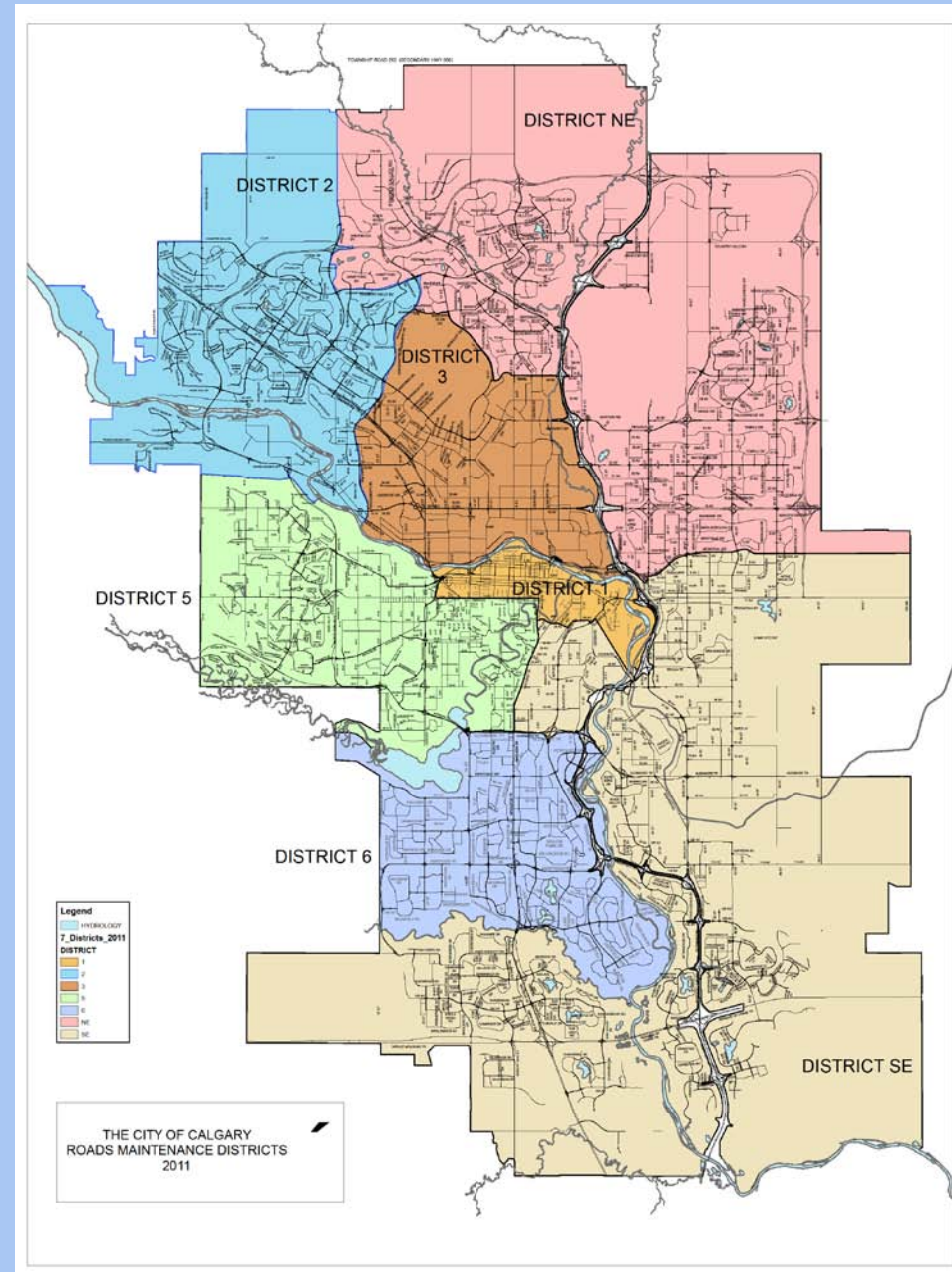
How many...?

Staff

- Approximately 450 field operations' staff and foremen
- Day shifts have 150 personnel
- Night shifts have 75 personnel

Equipment

- City forces include 27 graders, 74 tandem trucks with under body ploughs, 18 tandem trucks with front ploughs and 6 snow blowers



What's new in 2011-2012?

- Snow Route parking restrictions
- Closure of City snow storage facilities to the public
- Bare Pavement policy for Priority 1 and 2 routes
- Triple the amount of snow fencing

Will residential service continue this year?

- Yes. Those residential roads that are considered Priority 3 and 4s, will be included.
- Both day and night shifts will be active in residential areas
- Truck plows will ensure ruts are less than 12 cm, but not always to bare pavement
- Residents should expect to dig out driveways and around vehicles parked on the road

What is a Snow Route Parking Ban?

- At the start of each snow event, (5 cm or more of snow accumulation), The City will declare a Snow Route parking ban on most Priority 1 and Priority 2 routes
- Parking bans allow plows to clear the snow from curb to curb safely and efficiently
- These parking restrictions are expected to reduce plowing time by up to 30%, on Priority 2 routes allowing crews to start on Priority 3 and 4 (residential) routes faster
- Calgarians will be required to remove their cars from snow routes **immediately** or risk being ticketed and towed

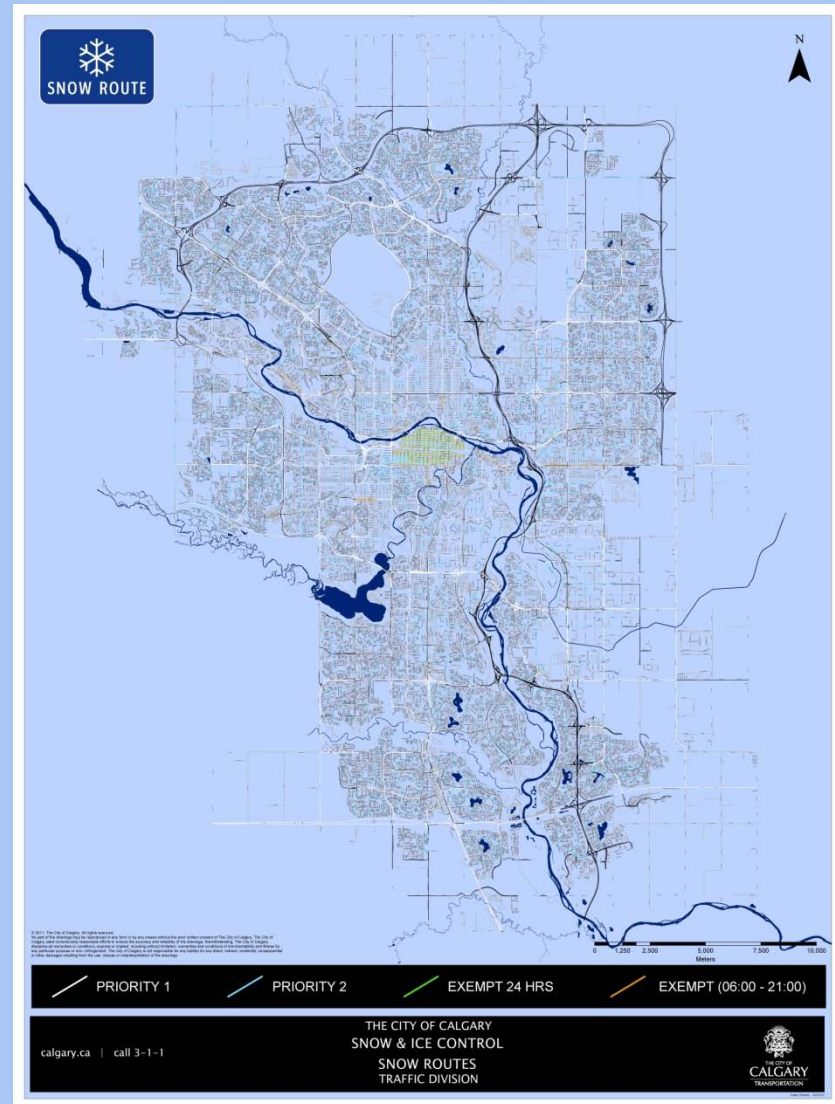
How do I know if I'm parked on a Snow Route?

Look for the Signs — Snow Route street signs have been installed on all Snow Routes that allow parking



How do I know if it's a Snow Route?

- View the PDF map which can be found on-line at Calgary.ca/snow
- A Snow Route layer is also being added to the Road Conditions Map
- An alphabetical list of all Snow Route will soon be available at Calgary.ca/snow



Are there any exemptions to the parking bans?

- The “streets” in the downtown core and all on-street handicap parking zones are exempt.
- Parking will only be restricted from 9 p.m. to 6 a.m. in these Business Revitalization Zones:
 - 17 Avenue S.W.
 - Inglewood
 - 4 Street S.W.
 - Marda Loop
 - Victoria Park
 - Montgomery
 - Bowness
 - Kensington
 - Downtown Avenues

Snow Route parking ban FAQs

- Why are Snow Route parking bans in effect for 72 hours?
- If a Snow Route parking ban has not been declared, but it is snowing, should people move their cars?
- If one area of the city gets a lot of snow, but another area doesn't, are the parking bans still in effect city-wide?
- My street has been plowed. Can I park my car on the road again?
- Where can I get more information about these bans?

Why did The City close its snow storage sites to the public?

- Snow storage sites have been closed to the general public and private contractors due to cost and environmental concerns
- The sites are both in need of repair
- Closures, due to repairs at the sites, will be rotated
- The City needs all the capacity at these sites for its snow storage
- Contractors were notified in July, ensuring enough time to find alternate arrangements

Bare Pavement Policy & Snow Fencing

Bare Pavement Policy

- Officially put into our SNIC Policy this year

Snow Fencing

- The snow fence program will be expanded this season from 6 km to over 21 km
- The locations of the snow fences can be found at Calgary.ca/snow

